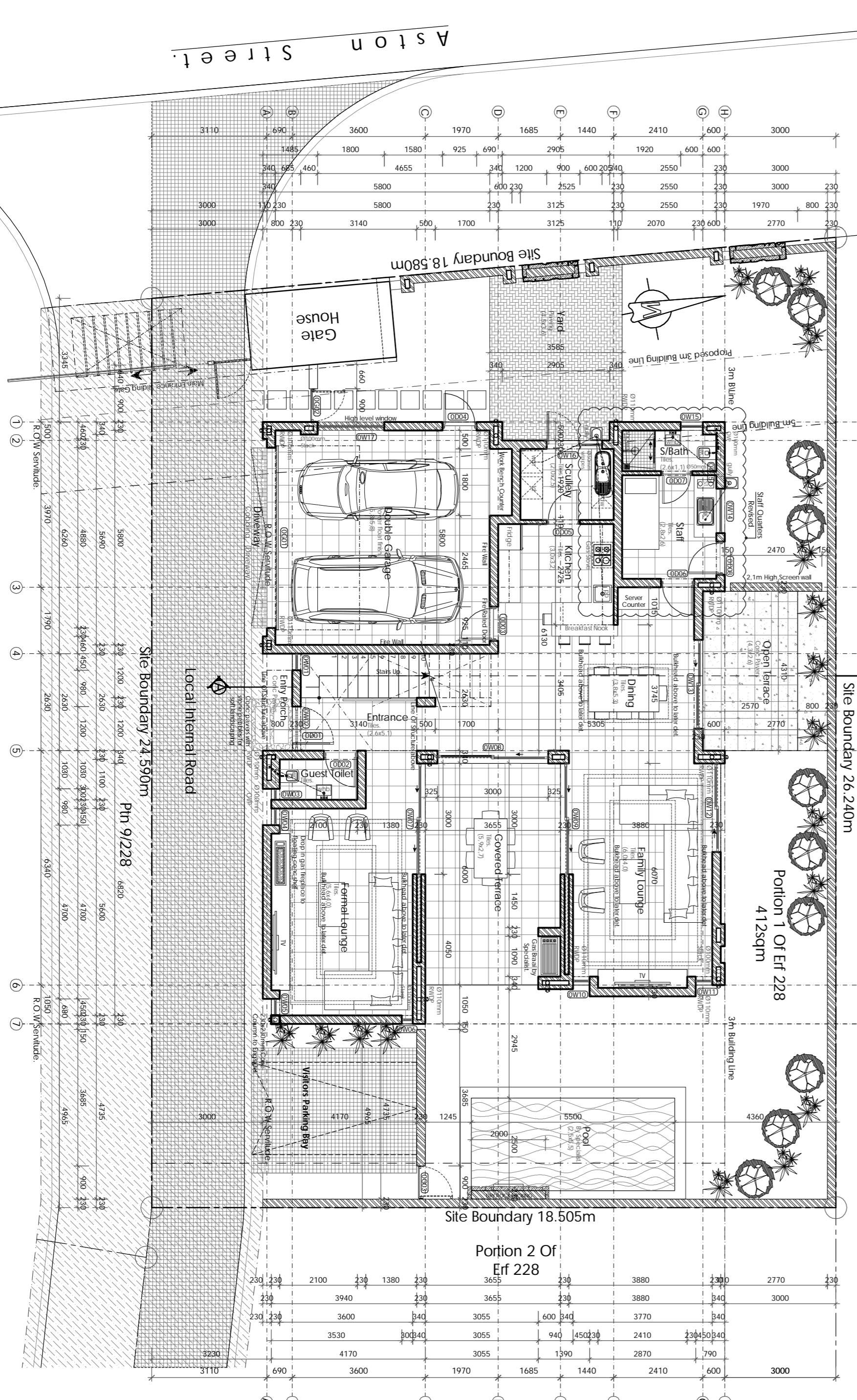


First Floor Plan Scale 1:100.



Ground Floor Plan Scale 1:100.

**AREA SCHEDULE:**  
**HOUSE A Portion 1**

ITEM	DESCRIPTION	ACTUAL	REQ./ALLOWED
1	GROUND FLOOR AREA	114.10 m <sup>2</sup>	114.10 m <sup>2</sup>
2	COVERED TERRACE	0.18 m <sup>2</sup>	0.18 m <sup>2</sup>
3	COVERED BALCONY	12.72 m <sup>2</sup>	12.72 m <sup>2</sup>
4	POOL	13.75 m <sup>2</sup>	13.75 m <sup>2</sup>
5	STAIR	1.27 m <sup>2</sup>	1.27 m <sup>2</sup>
6	STAFF	12.72 m <sup>2</sup>	12.72 m <sup>2</sup>
7	STAIR	1.27 m <sup>2</sup>	1.27 m <sup>2</sup>
8	STAFF	12.72 m <sup>2</sup>	12.72 m <sup>2</sup>
9	STAIR	1.27 m <sup>2</sup>	1.27 m <sup>2</sup>
10	STAFF	12.72 m <sup>2</sup>	12.72 m <sup>2</sup>
11	STAIR	1.27 m <sup>2</sup>	1.27 m <sup>2</sup>
12	STAFF	12.72 m <sup>2</sup>	12.72 m <sup>2</sup>
13	STAIR	1.27 m <sup>2</sup>	1.27 m <sup>2</sup>
14	STAFF	12.72 m <sup>2</sup>	12.72 m <sup>2</sup>
15	STAIR	1.27 m <sup>2</sup>	1.27 m <sup>2</sup>
16	STAFF	12.72 m <sup>2</sup>	12.72 m <sup>2</sup>
17	STAIR	1.27 m <sup>2</sup>	1.27 m <sup>2</sup>
18	STAFF	12.72 m <sup>2</sup>	12.72 m <sup>2</sup>
19	STAIR	1.27 m <sup>2</sup>	1.27 m <sup>2</sup>
20	STAFF	12.72 m <sup>2</sup>	12.72 m <sup>2</sup>
21	STAIR	1.27 m <sup>2</sup>	1.27 m <sup>2</sup>
22	STAFF	12.72 m <sup>2</sup>	12.72 m <sup>2</sup>
23	STAIR	1.27 m <sup>2</sup>	1.27 m <sup>2</sup>
24	STAFF	12.72 m <sup>2</sup>	12.72 m <sup>2</sup>
25	STAIR	1.27 m <sup>2</sup>	1.27 m <sup>2</sup>
26	STAFF	12.72 m <sup>2</sup>	12.72 m <sup>2</sup>
27	STAIR	1.27 m <sup>2</sup>	1.27 m <sup>2</sup>
28	STAFF	12.72 m <sup>2</sup>	12.72 m <sup>2</sup>
29	STAIR	1.27 m <sup>2</sup>	1.27 m <sup>2</sup>
30	STAFF	12.72 m <sup>2</sup>	12.72 m <sup>2</sup>
31	STAIR	1.27 m <sup>2</sup>	1.27 m <sup>2</sup>
32	STAFF	12.72 m <sup>2</sup>	12.72 m <sup>2</sup>
33	STAIR	1.27 m <sup>2</sup>	1.27 m <sup>2</sup>
34	STAFF	12.72 m <sup>2</sup>	12.72 m <sup>2</sup>
35	STAIR	1.27 m <sup>2</sup>	1.27 m <sup>2</sup>
36	STAFF	12.72 m <sup>2</sup>	12.72 m <sup>2</sup>
37	STAIR	1.27 m <sup>2</sup>	1.27 m <sup>2</sup>
38	STAFF	12.72 m <sup>2</sup>	12.72 m <sup>2</sup>
39	STAIR	1.27 m <sup>2</sup>	1.27 m <sup>2</sup>
40	STAFF	12.72 m <sup>2</sup>	12.72 m <sup>2</sup>
41	STAIR	1.27 m <sup>2</sup>	1.27 m <sup>2</sup>
42	STAFF	12.72 m <sup>2</sup>	12.72 m <sup>2</sup>
43	STAIR	1.27 m <sup>2</sup>	1.27 m <sup>2</sup>
44	STAFF	12.72 m <sup>2</sup>	12.72 m <sup>2</sup>
45	STAIR	1.27 m <sup>2</sup>	1.27 m <sup>2</sup>
46	STAFF	12.72 m <sup>2</sup>	12.72 m <sup>2</sup>
47	STAIR	1.27 m <sup>2</sup>	1.27 m <sup>2</sup>
48	STAFF	12.72 m <sup>2</sup>	12.72 m <sup>2</sup>
49	STAIR	1.27 m <sup>2</sup>	1.27 m <sup>2</sup>
50	STAFF	12.72 m <sup>2</sup>	12.72 m <sup>2</sup>
51	STAIR	1.27 m <sup>2</sup>	1.27 m <sup>2</sup>
52	STAFF	12.72 m <sup>2</sup>	12.72 m <sup>2</sup>
53	STAIR	1.27 m <sup>2</sup>	1.27 m <sup>2</sup>
54	STAFF	12.72 m <sup>2</sup>	12.72 m <sup>2</sup>
55	STAIR	1.27 m <sup>2</sup>	1.27 m <sup>2</sup>
56	STAFF	12.72 m <sup>2</sup>	12.72 m <sup>2</sup>
57	STAIR	1.27 m <sup>2</sup>	1.27 m <sup>2</sup>
58	STAFF	12.72 m <sup>2</sup>	12.72 m <sup>2</sup>
59	STAIR	1.27 m <sup>2</sup>	1.27 m <sup>2</sup>
60	STAFF	12.72 m <sup>2</sup>	12.72 m <sup>2</sup>
61	STAIR	1.27 m <sup>2</sup>	1.27 m <sup>2</sup>
62	STAFF	12.72 m <sup>2</sup>	12.72 m <sup>2</sup>
63	STAIR	1.27 m <sup>2</sup>	1.27 m <sup>2</sup>
64	STAFF	12.72 m <sup>2</sup>	12.72 m <sup>2</sup>
65	STAIR	1.27 m <sup>2</sup>	1.27 m <sup>2</sup>
66	STAFF	12.72 m <sup>2</sup>	12.72 m <sup>2</sup>
67	STAIR	1.27 m <sup>2</sup>	1.27 m <sup>2</sup>
68	STAFF	12.72 m <sup>2</sup>	12.72 m <sup>2</sup>
69	STAIR	1.27 m <sup>2</sup>	1.27 m <sup>2</sup>
70	STAFF	12.72 m <sup>2</sup>	12.72 m <sup>2</sup>
71	STAIR	1.27 m <sup>2</sup>	1.27 m <sup>2</sup>
72	STAFF	12.72 m <sup>2</sup>	12.72 m <sup>2</sup>
73	STAIR	1.27 m <sup>2</sup>	1.27 m <sup>2</sup>
74	STAFF	12.72 m <sup>2</sup>	12.72 m <sup>2</sup>
75	STAIR	1.27 m <sup>2</sup>	1.27 m <sup>2</sup>
76	STAFF	12.72 m <sup>2</sup>	12.72 m <sup>2</sup>
77	STAIR	1.27 m <sup>2</sup>	1.27 m <sup>2</sup>
78	STAFF	12.72 m <sup>2</sup>	12.72 m <sup>2</sup>
79	STAIR	1.27 m <sup>2</sup>	1.27 m <sup>2</sup>
80	STAFF	12.72 m <sup>2</sup>	12.72 m <sup>2</sup>
81	STAIR	1.27 m <sup>2</sup>	1.27 m <sup>2</sup>
82	STAFF	12.72 m <sup>2</sup>	12.72 m <sup>2</sup>
83	STAIR	1.27 m <sup>2</sup>	1.27 m <sup>2</sup>
84	STAFF	12.72 m <sup>2</sup>	12.72 m <sup>2</sup>
85	STAIR	1.27 m <sup>2</sup>	1.27 m <sup>2</sup>
86	STAFF	12.72 m <sup>2</sup>	12.72 m <sup>2</sup>
87	STAIR	1.27 m <sup>2</sup>	1.27 m <sup>2</sup>
88	STAFF	12.72 m <sup>2</sup>	12.72 m <sup>2</sup>
89	STAIR	1.27 m <sup>2</sup>	1.27 m <sup>2</sup>
90	STAFF	12.72 m <sup>2</sup>	12.72 m <sup>2</sup>
91	STAIR	1.27 m <sup>2</sup>	1.27 m <sup>2</sup>
92	STAFF	12.72 m <sup>2</sup>	12.72 m <sup>2</sup>
93	STAIR	1.27 m <sup>2</sup>	1.27 m <sup>2</sup>
94	STAFF	12.72 m <sup>2</sup>	12.72 m <sup>2</sup>
95	STAIR	1.27 m <sup>2</sup>	1.27 m <sup>2</sup>
96	STAFF	12.72 m <sup>2</sup>	12.72 m <sup>2</sup>
97	STAIR	1.27 m <sup>2</sup>	1.27 m <sup>2</sup>
98	STAFF	12.72 m <sup>2</sup>	12.72 m <sup>2</sup>
99	STAIR	1.27 m <sup>2</sup>	1.27 m <sup>2</sup>
100	STAFF	12.72 m <sup>2</sup>	12.72 m <sup>2</sup>

**CONSTRUCTION NOTES**

1. FOOTINGS:
  - 1.1 All 150mm concrete footings to be cast in situ.
  - 1.2 All 150mm concrete footings to be cast in situ.
  - 1.3 All 150mm concrete footings to be cast in situ.
  - 1.4 All 150mm concrete footings to be cast in situ.
  - 1.5 All 150mm concrete footings to be cast in situ.
2. WALLS:
  - 2.1 All walls to be cast in situ.
  - 2.2 All walls to be cast in situ.
  - 2.3 All walls to be cast in situ.
  - 2.4 All walls to be cast in situ.
  - 2.5 All walls to be cast in situ.
3. FLOORS:
  - 3.1 All floors to be cast in situ.
  - 3.2 All floors to be cast in situ.
  - 3.3 All floors to be cast in situ.
  - 3.4 All floors to be cast in situ.
  - 3.5 All floors to be cast in situ.
4. ROOFS:
  - 4.1 All roofs to be cast in situ.
  - 4.2 All roofs to be cast in situ.
  - 4.3 All roofs to be cast in situ.
  - 4.4 All roofs to be cast in situ.
  - 4.5 All roofs to be cast in situ.
5. WINDOWS:
  - 5.1 All windows to be cast in situ.
  - 5.2 All windows to be cast in situ.
  - 5.3 All windows to be cast in situ.
  - 5.4 All windows to be cast in situ.
  - 5.5 All windows to be cast in situ.
6. DOORS:
  - 6.1 All doors to be cast in situ.
  - 6.2 All doors to be cast in situ.
  - 6.3 All doors to be cast in situ.
  - 6.4 All doors to be cast in situ.
  - 6.5 All doors to be cast in situ.
7. STAIRS:
  - 7.1 All stairs to be cast in situ.
  - 7.2 All stairs to be cast in situ.
  - 7.3 All stairs to be cast in situ.
  - 7.4 All stairs to be cast in situ.
  - 7.5 All stairs to be cast in situ.
8. POOLS:
  - 8.1 All pools to be cast in situ.
  - 8.2 All pools to be cast in situ.
  - 8.3 All pools to be cast in situ.
  - 8.4 All pools to be cast in situ.
  - 8.5 All pools to be cast in situ.
9. TERRACES:
  - 9.1 All terraces to be cast in situ.
  - 9.2 All terraces to be cast in situ.
  - 9.3 All terraces to be cast in situ.
  - 9.4 All terraces to be cast in situ.
  - 9.5 All terraces to be cast in situ.
10. BALCONIES:
  - 10.1 All balconies to be cast in situ.
  - 10.2 All balconies to be cast in situ.
  - 10.3 All balconies to be cast in situ.
  - 10.4 All balconies to be cast in situ.
  - 10.5 All balconies to be cast in situ.
11. DRIVEWAYS:
  - 11.1 All driveways to be cast in situ.
  - 11.2 All driveways to be cast in situ.
  - 11.3 All driveways to be cast in situ.
  - 11.4 All driveways to be cast in situ.
  - 11.5 All driveways to be cast in situ.
12. GARDENS:
  - 12.1 All gardens to be cast in situ.
  - 12.2 All gardens to be cast in situ.
  - 12.3 All gardens to be cast in situ.
  - 12.4 All gardens to be cast in situ.
  - 12.5 All gardens to be cast in situ.
13. OTHER:
  - 13.1 All other elements to be cast in situ.
  - 13.2 All other elements to be cast in situ.
  - 13.3 All other elements to be cast in situ.
  - 13.4 All other elements to be cast in situ.
  - 13.5 All other elements to be cast in situ.

ALL WORK TO COMPLY WITH N.B.R. ALL DIMENSIONS & LEVELS TO BE CHECKED ON SITE AND VERIFIED WITH THE ARCHITECT PRIOR TO ANY DISCREPANCIES TO BE CONFIRMED WITH THE ARCHITECT / TECHNOLOGIST PRIOR TO COMMENCING ANY BUILDING WORK. DIMENSIONS BUT WORK FROM NO PART OF ANY STRUCTURE TO ENDOUR ANY BOUNDARY LINE. ACCEPTS NO RESPONSIBILITY FOR ERRORS RESULTING FROM MISINTERPRETATION OF THE DRAWINGS.

THIS PLAN IS PROTECTED BY COPYRIGHT & REMAINS THE PROPERTY OF THE REGISTERED ARCHITECT/TECHNOLOGIST AS APPOINTED.

<b>GAVIN WARBURTON</b>	
3, 4 & 5, 6 & 7, 8 & 9, 10 & 11, 12 & 13, 14 & 15, 16 & 17, 18 & 19, 20 & 21, 22 & 23, 24 & 25, 26 & 27, 28 & 29, 30 & 31, 32 & 33, 34 & 35, 36 & 37, 38 & 39, 40 & 41, 42 & 43, 44 & 45, 46 & 47, 48 & 49, 50 & 51, 52 & 53, 54 & 55, 56 & 57, 58 & 59, 60 & 61, 62 & 63, 64 & 65, 66 & 67, 68 & 69, 70 & 71, 72 & 73, 74 & 75, 76 & 77, 78 & 79, 80 & 81, 82 & 83, 84 & 85, 86 & 87, 88 & 89, 90 & 91, 92 & 93, 94 & 95, 96 & 97, 98 & 99, 100 & 101, 102 & 103, 104 & 105, 106 & 107, 108 & 109, 110 & 111, 112 & 113, 114 & 115, 116 & 117, 118 & 119, 120 & 121, 122 & 123, 124 & 125, 126 & 127, 128 & 129, 130 & 131, 132 & 133, 134 & 135, 136 & 137, 138 & 139, 140 & 141, 142 & 143, 144 & 145, 146 & 147, 148 & 149, 150 & 151, 152 & 153, 154 & 155, 156 & 157, 158 & 159, 160 & 161, 162 & 163, 164 & 165, 166 & 167, 168 & 169, 170 & 171, 172 & 173, 174 & 175, 176 & 177, 178 & 179, 180 & 181, 182 & 183, 184 & 185, 186 & 187, 188 & 189, 190 & 191, 192 & 193, 194 & 195, 196 & 197, 198 & 199, 200 & 201, 202 & 203, 204 & 205, 206 & 207, 208 & 209, 210 & 211, 212 & 213, 214 & 215, 216 & 217, 218 & 219, 220 & 221, 222 & 223, 224 & 225, 226 & 227, 228 & 229, 230 & 231, 232 & 233, 234 & 235, 236 & 237, 238 & 239, 240 & 241, 242 & 243, 244 & 245, 246 & 247, 248 & 249, 250 & 251, 252 & 253, 254 & 255, 256 & 257, 258 & 259, 260 & 261, 262 & 263, 264 & 265, 266 & 267, 268 & 269, 270 & 271, 272 & 273, 274 & 275, 276 & 277, 278 & 279, 280 & 281, 282 & 283, 284 & 285, 286 & 287, 288 & 289, 290 & 291, 292 & 293, 294 & 295, 296 & 297, 298 & 299, 300 & 301, 302 & 303, 304 & 305, 306 & 307, 308 & 309, 310 & 311, 312 & 313, 314 & 315, 316 & 317, 318 & 319, 320 & 321, 322 & 323, 324 & 325, 326 & 327, 328 & 329, 330 & 331, 332 & 333, 334 & 335, 336 & 337, 338 & 339, 340 & 341, 342 & 343, 344 & 345, 346 & 347, 348 & 349, 350 & 351, 352 & 353, 354 & 355, 356 & 357, 358 & 359, 360 & 361, 362 & 363, 364 & 365, 366 & 367, 368 & 369, 370 & 371, 372 & 373, 374 & 375, 376 & 377, 378 & 379, 380 & 381, 382 & 383, 384 & 385, 386 & 387, 388 & 389, 390 & 391, 392 & 393, 394 & 395, 396 & 397, 398 & 399, 400 & 401, 402 & 403, 404 & 405, 406 & 407, 408 & 409, 410 & 411, 412 & 413, 414 & 415, 416 & 417, 418 & 419, 420 & 421, 422 & 423, 424 & 425, 426 & 427, 428 & 429, 430 & 431, 432 & 433, 434 & 435, 436 & 437, 438 & 439, 440 & 441, 442 & 443, 444 & 445, 446 & 447, 448 & 449, 450 & 451, 452 & 453, 454 & 455, 456 & 457, 458 & 459, 460 & 461, 462 & 463, 464 & 465, 466 & 467, 468 & 469, 470 & 471, 472 & 473, 474 & 475, 476 & 477, 478 & 479, 480 & 481, 482 & 483, 484 & 485, 486 & 487, 488 & 489, 490 & 491, 492 & 493, 494 & 495, 496 & 497, 498 & 499, 500 & 501, 502 & 503, 504 & 505, 506 & 507, 508 & 509, 510 & 511, 512 & 513, 514 & 515, 516 & 517, 518 & 519, 520 & 521, 522 & 523, 524 & 525, 526 & 527, 528 & 529, 530 & 531, 532 & 533, 534 & 535, 536 & 537, 538 & 539, 540 & 541, 542 & 543, 544 & 545, 546 & 547, 548 & 549, 550 & 551, 552 & 553, 554 & 555, 556 & 557, 558 & 559, 560 & 561, 562 & 563, 564 & 565, 566 & 567, 568 & 569, 570 & 571, 572 & 573, 574 & 575, 576 & 577, 578 & 579, 580 & 581, 582 & 583, 584 & 585, 586 & 587, 588 & 589, 590 & 591, 592 & 593, 594 & 595, 596 & 597, 598 & 599, 600 & 601, 602 & 603, 604 & 605, 606 & 607, 608 & 609, 610 & 611, 612 & 613, 614 & 615, 616 & 617, 618 & 619, 620 & 621, 622 & 623, 624 & 625, 626 & 627, 628 & 629, 630 & 631, 632 & 633, 634 & 635, 636 & 637, 638 & 639, 640 & 641, 642 & 643, 644 & 645, 646 & 647, 648 & 649, 650 & 651, 652 & 653, 654 & 655, 656 & 657, 658 & 659, 660 & 661, 662 & 663, 664 & 665, 666 & 667, 668 & 669, 670 & 671, 672 & 673, 674 & 675, 676 & 677, 678 & 679, 680 & 681, 682 & 683, 684 & 685, 686 & 687, 688 & 689, 690 & 691, 692 & 693, 694 & 695, 696 & 697, 698 & 699, 700 & 701, 702 & 703, 704 & 705, 706 & 707, 708 & 709, 710 & 711, 712 & 713, 714 & 715, 716 & 717, 718 & 719, 720 & 721, 722 & 723, 724 & 725, 726 & 727, 728 & 729, 730 & 731, 732 & 733, 734 & 735, 736 & 737, 738 & 739, 740 & 741, 742 &	