



DEVELOPMENTS

THE RUBIK
UNIT FLOOR PLANS



HEAD OFFICE 021 433 2580

dogongroup.com

A visionary company with decades of experience



DEVELOPMENTS

COMPANY PARTICULARS

Established in 2002, Dogon Group Properties has proven to be a true real estate success story. The Dogon name has become synonymous with the proficient and effective marketing and selling of premium grade properties in Cape Town and particularly the sought-after Atlantic Seaboard. Dogon Group currently have offices in high profile positions in Sea Point and Southern Suburbs.

Dogon Group Properties prides itself on its unique and focused approach to marketing and sales, providing a comprehensive and tailored solution to ensure that sales occur at the optimum price within a compressed space of time. The company utilizes an evolved and distinctive sales force of highly adept and skilled sales agents who are selected for their extensive experience, professionalism and successful track records.

Headed by Managing Director Alexa Horne, Dogon Group has a dedicated in-house marketing department ensuring that focused and specialized marketing strategies are implemented. The powerful proprietary Dogon Group database combined with its eye-catching and prominent advertising, both in print and digital media, together with our visible network of sales offices support our strong performance on the Western Cape's Atlantic Seaboard, Southern Suburbs, Western Seaboard and surrounding areas.

DOGON GROUP PROPERTIES (PTY) LTD
REGISTRATION NO: 2002/020365/07
FIDELITY FUND CERTIFICATE NO: F110941
ALEXA HORNE (MANAGING DIRECTOR)

P O BOX 605 SEA POINT 8060
THE KINGS, 101 REGENT ROAD
SEA POINT, SOUTH AFRICA
TEL +27 21 433 2580
FAX +27 21 433 2781

SALES AGENTS



LESLEY RENSBURG
061 439 8225
lesley@dogongroup.com

Registered with the PPRA - Full Status Agent - FFC No. 1152541



LEAH SLEIGHT
082 608 3388
leah@dogongroup.com

Registered with the PPRA - Full Status Agent - FFC No. 1198017

HEAD OFFICE **021 433 2580**

dogongroup.com

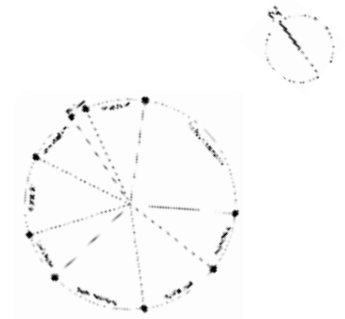
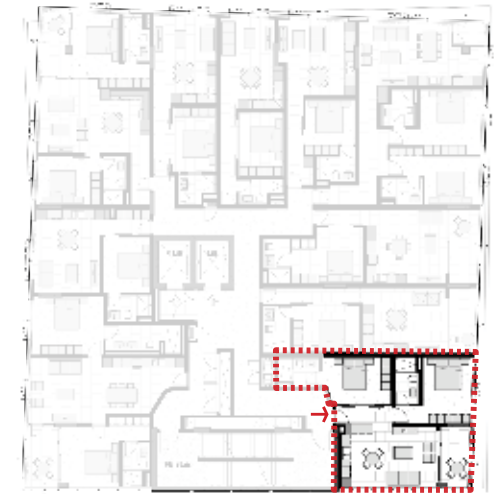
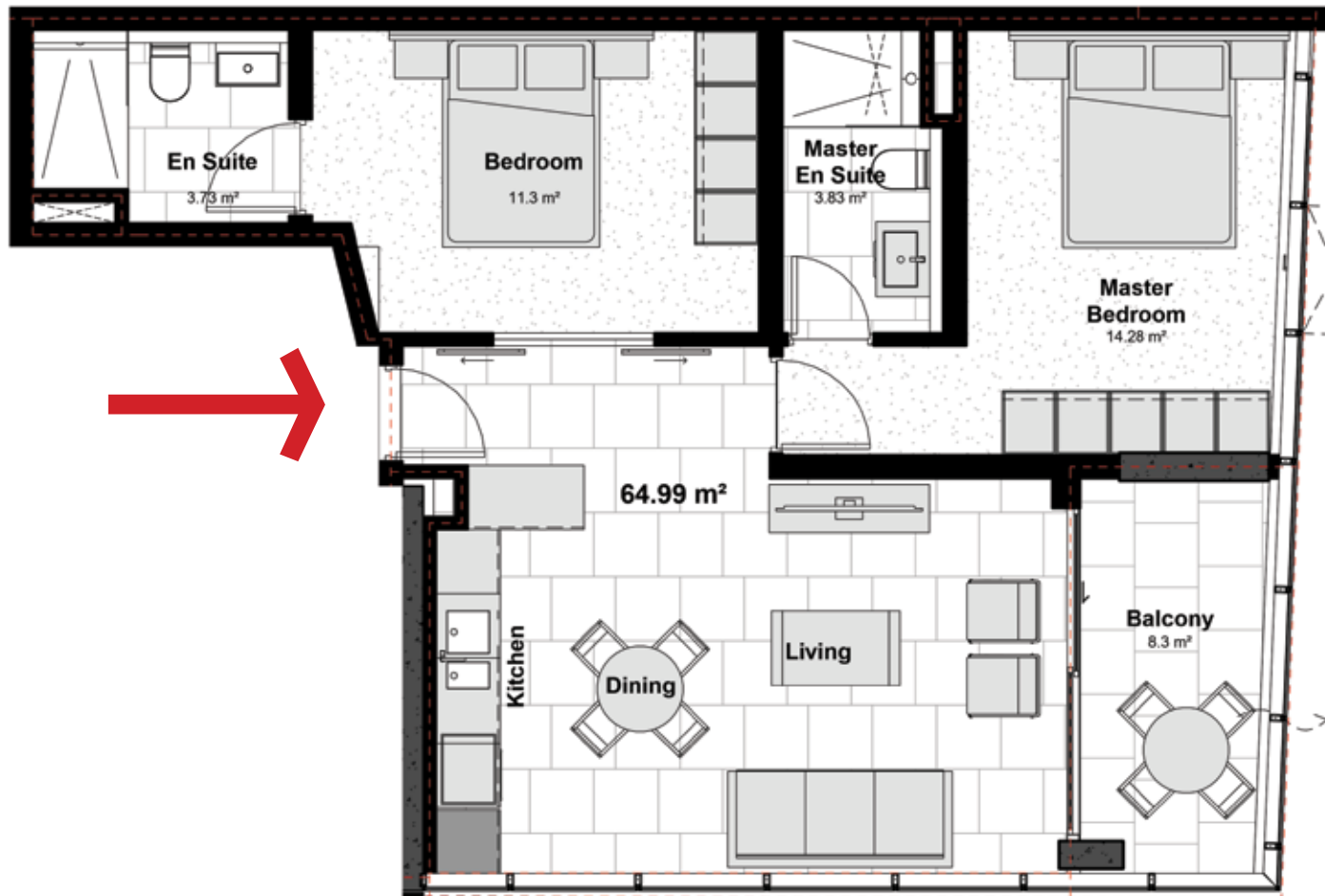
A visionary company with decades of experience

TYPICAL RESIDENTIAL 18TH FLOOR



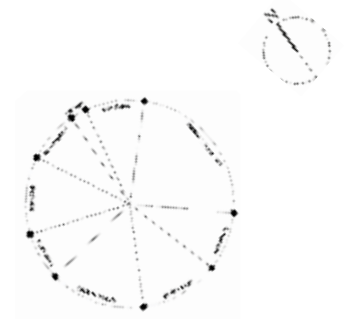
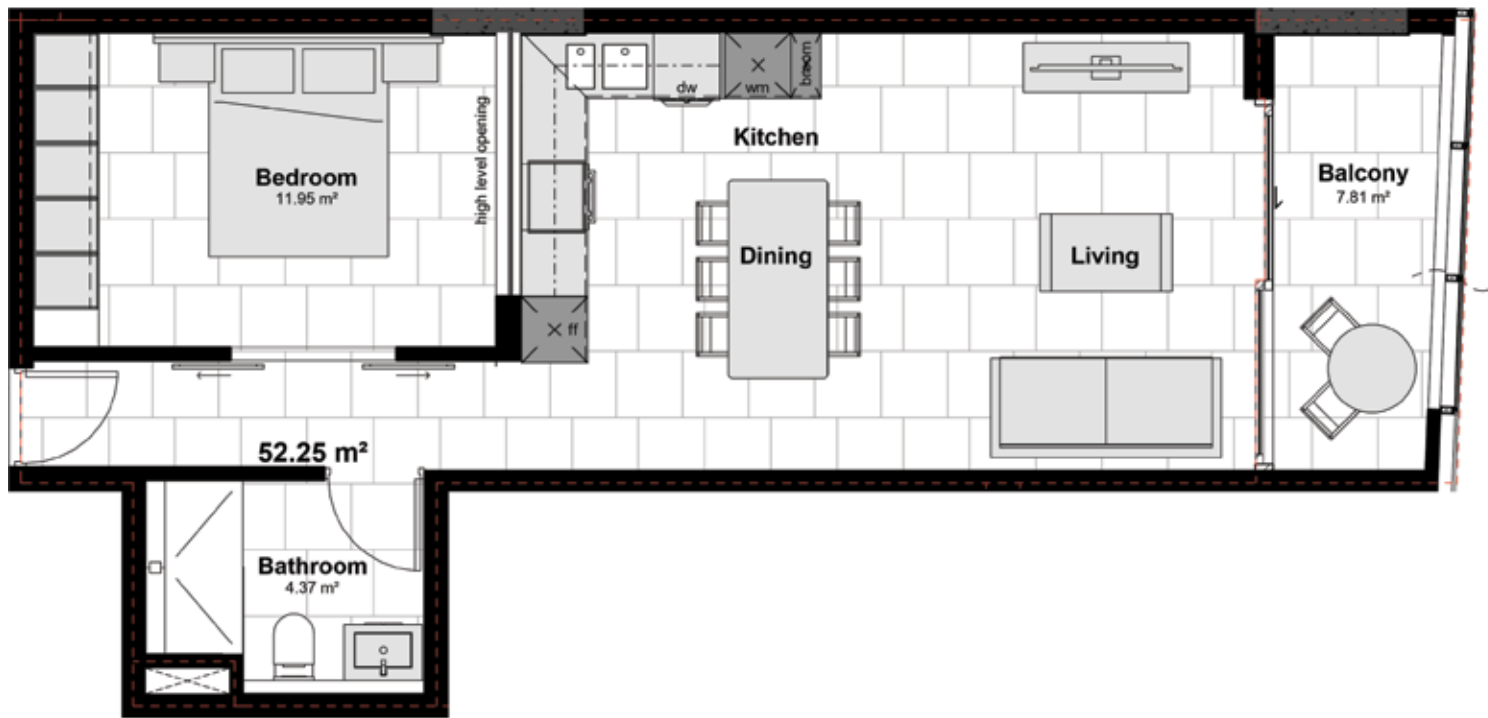
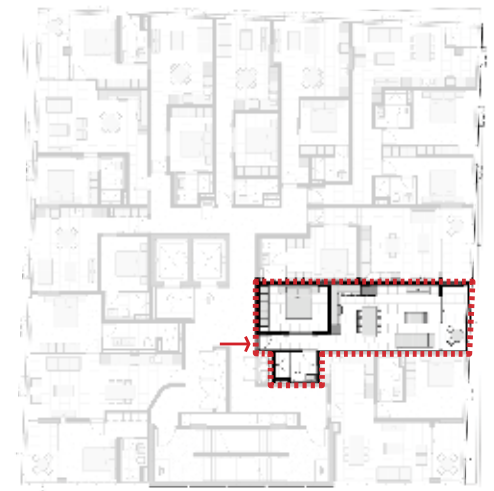
UNIT 18-02

TYPICAL RESIDENTIAL 19TH FLOOR



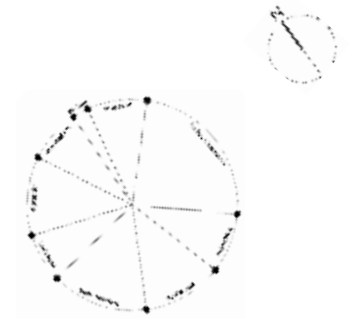
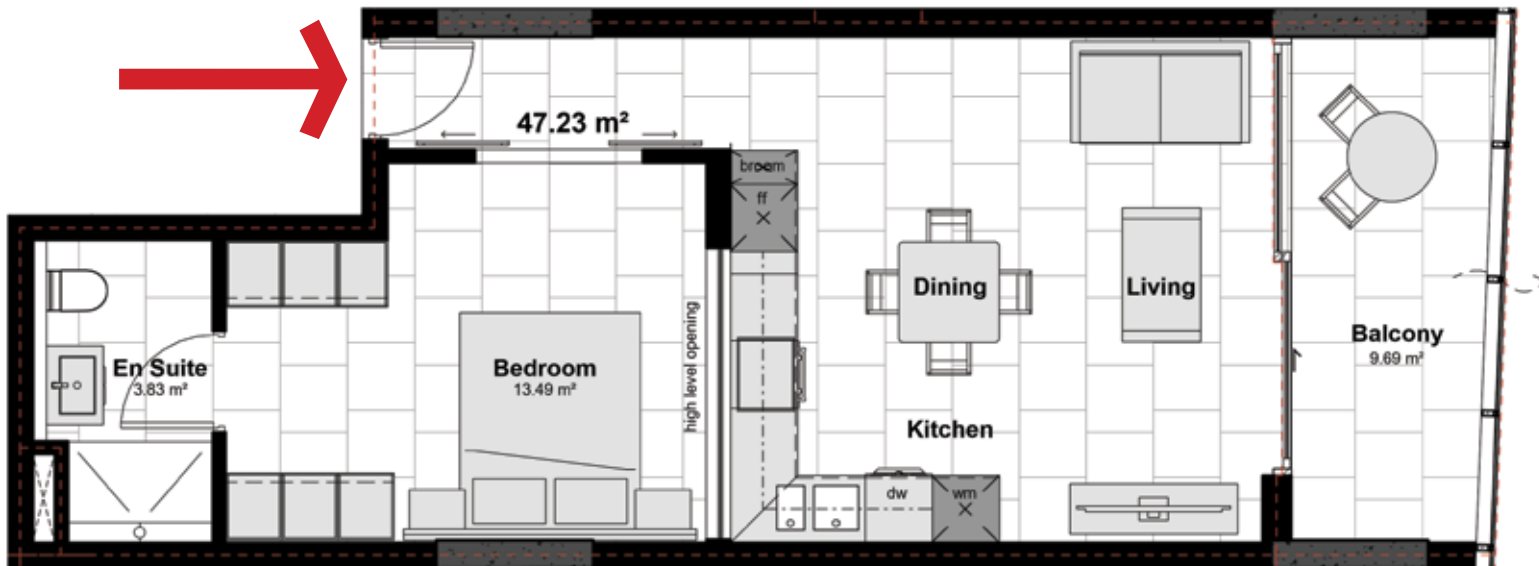
UNIT 19-02

TYPICAL RESIDENTIAL 22ND FLOOR

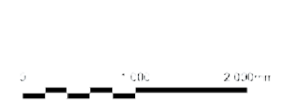


UNIT 22-03

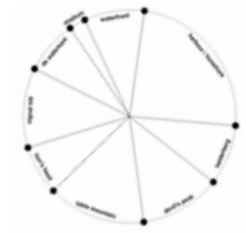
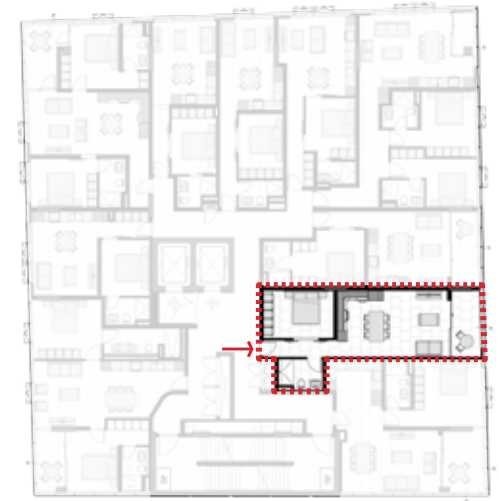
TYPICAL RESIDENTIAL 22ND FLOOR



UNIT 22-04



TYPICAL RESIDENTIAL 23RD FLOOR



UNIT 23-03

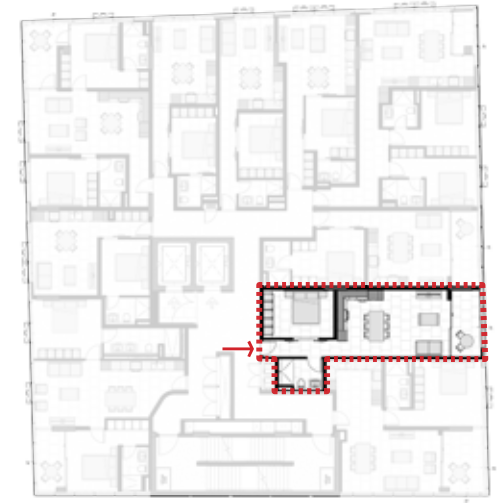
TYPICAL RESIDENTIAL 23RD FLOOR



UNIT 23-05 COMBINED 04 & 05



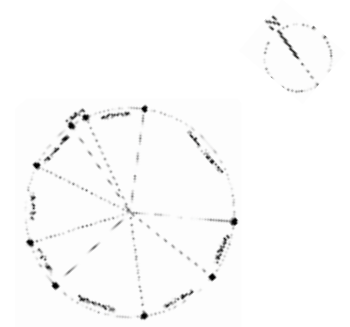
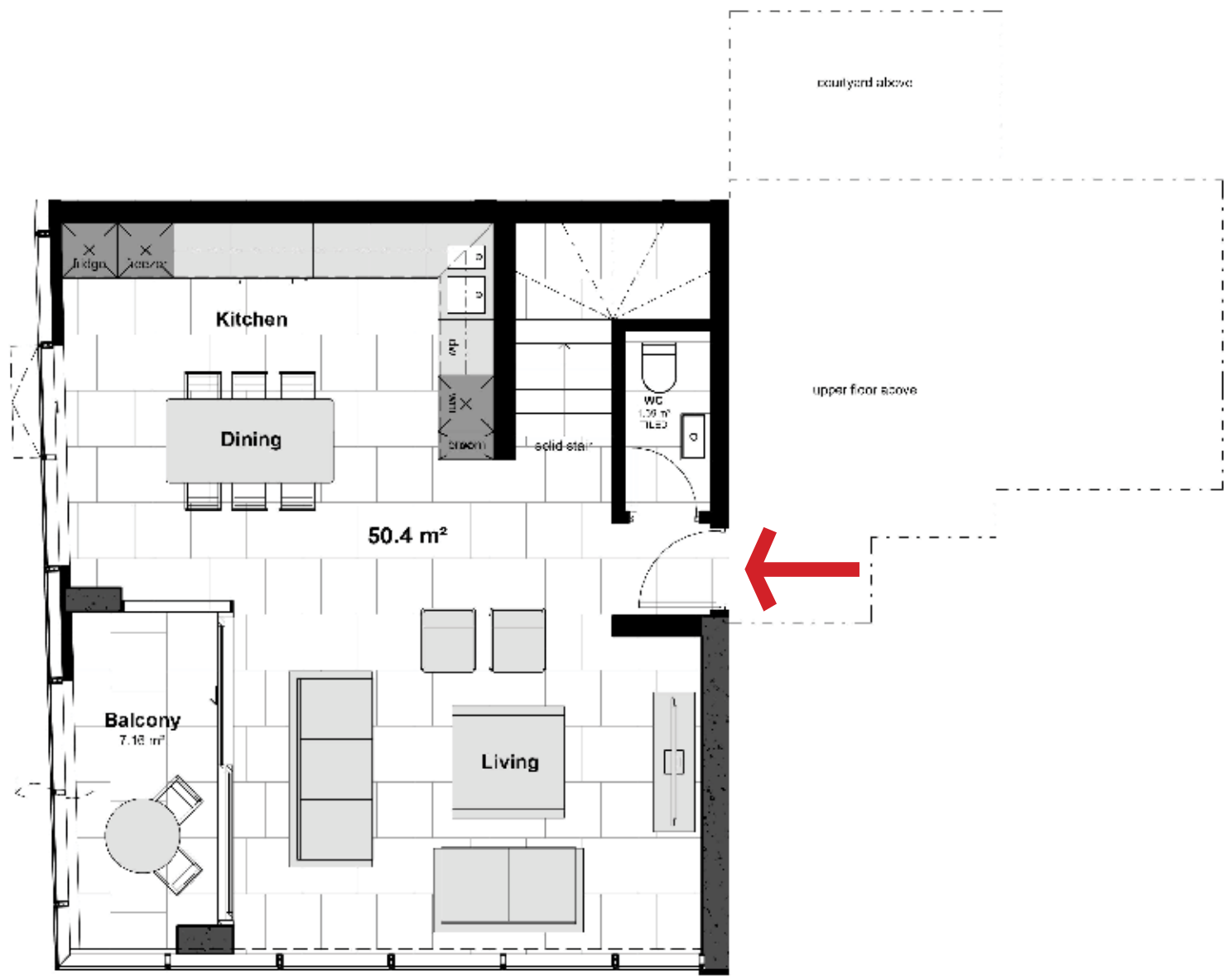
TYPICAL RESIDENTIAL 24TH FLOOR



UNIT 24-03

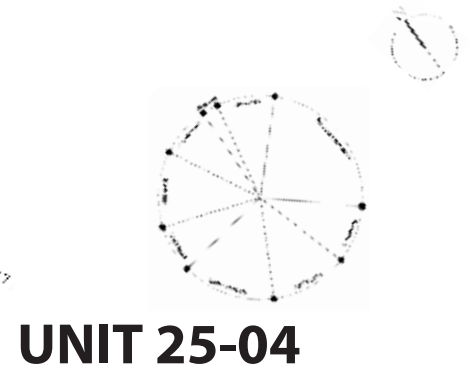
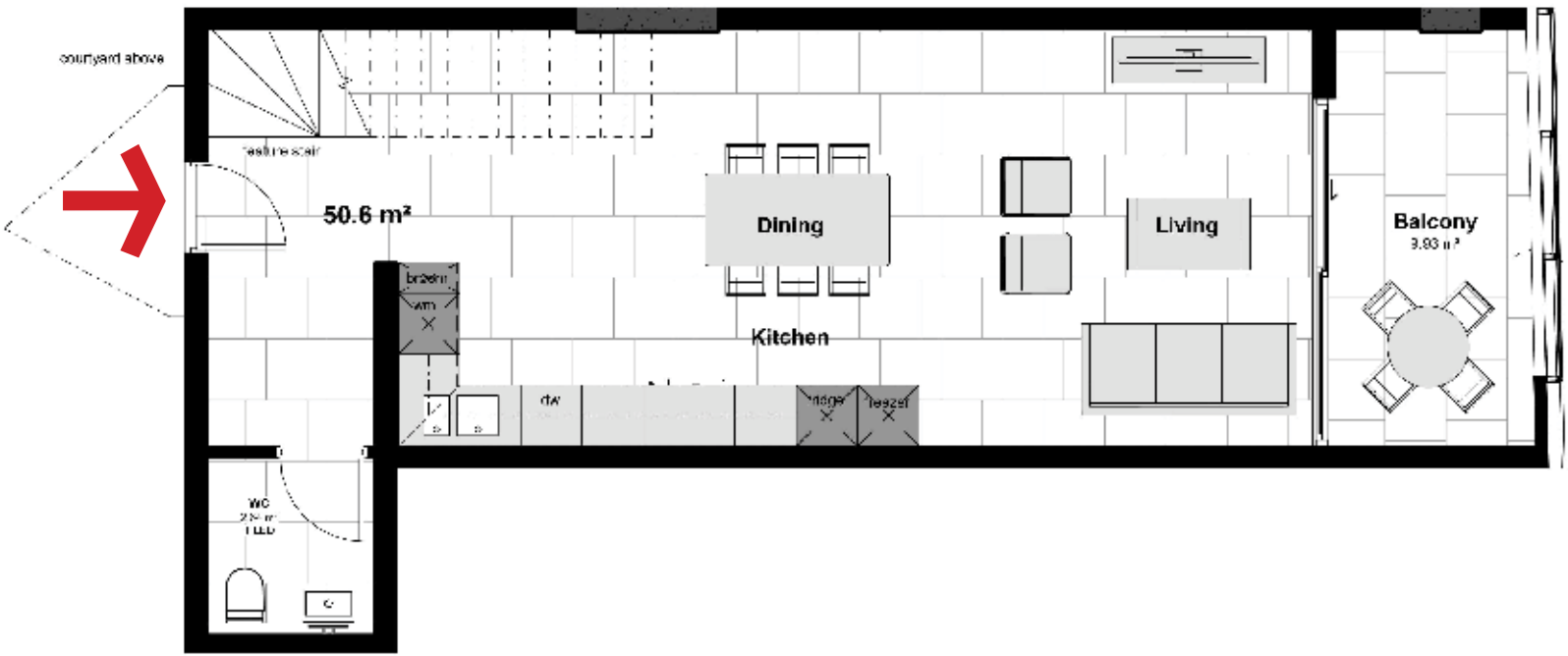


PENTHOUSE RESIDENTIAL 25TH FLOOR (lower floor)



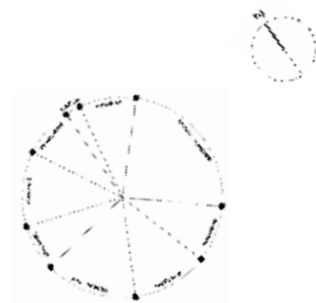
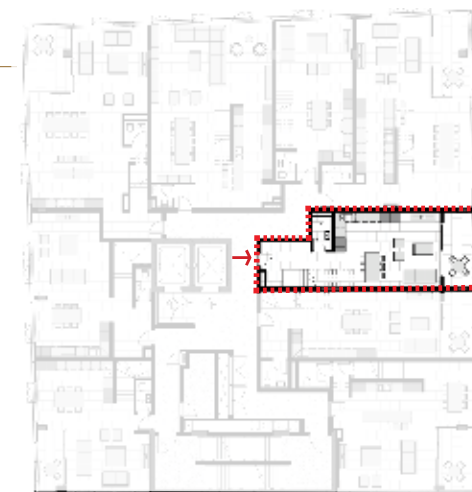
UNIT 25-02

PENTHOUSE RESIDENTIAL 25TH FLOOR (lower floor)



UNIT 25-04

PENTHOUSE RESIDENTIAL 25TH FLOOR (lower floor)



UNIT 25-05

courtyard above

upstairs above

45.64 m²

feature slab

WC

Kitchen

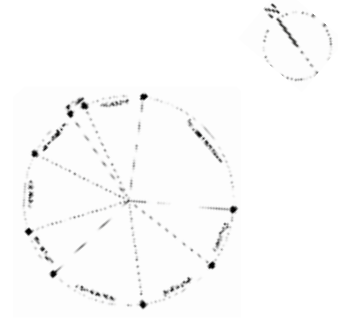
Dining

Living

Balcony

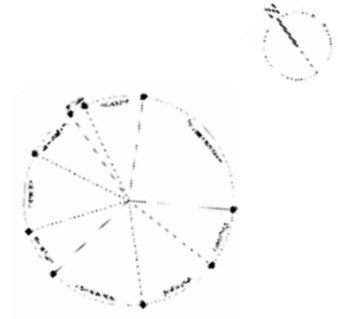
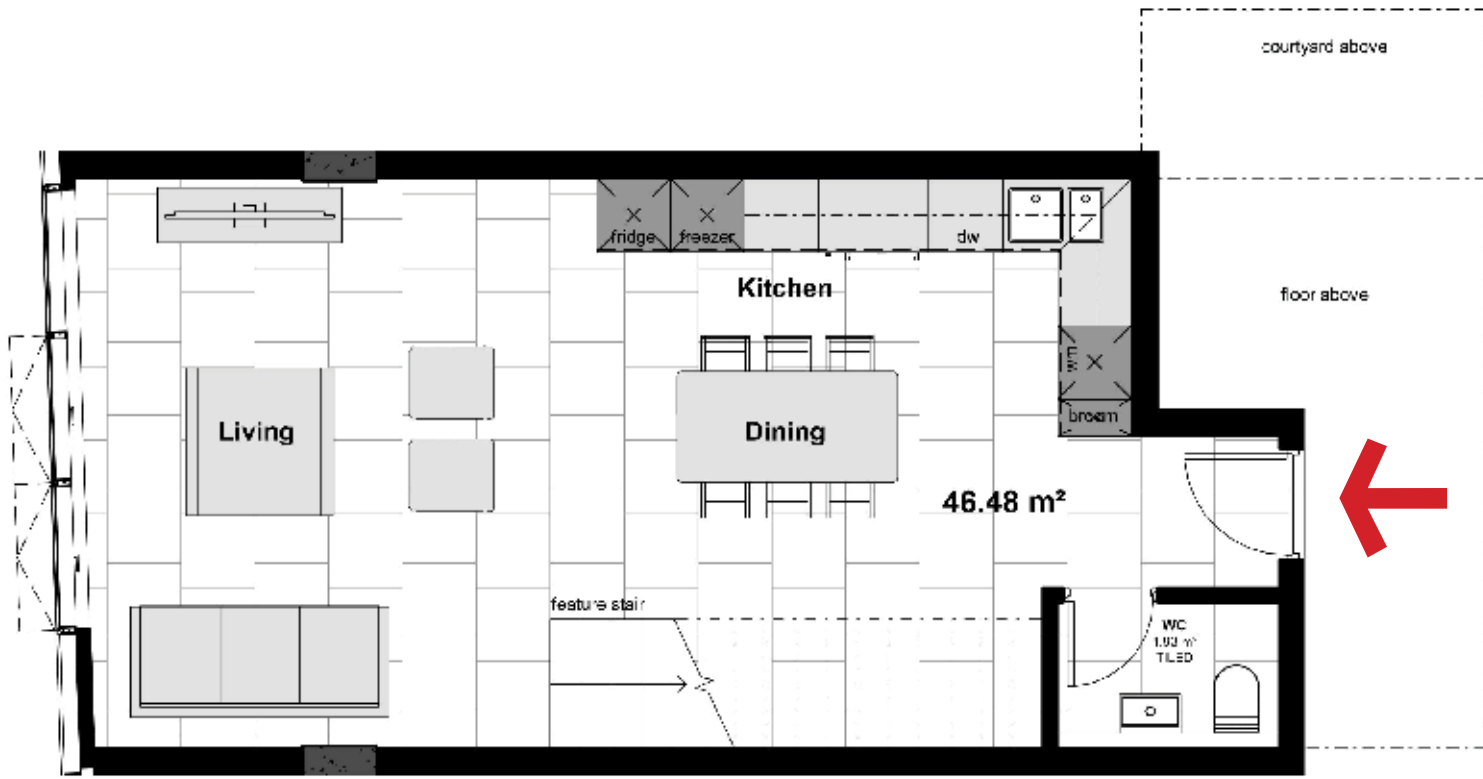
10.17 m²

PENTHOUSE RESIDENTIAL 25TH FLOOR (lower floor)



UNIT 25-06

PENTHOUSE RESIDENTIAL 25TH FLOOR (lower floor)



UNIT 25-07