



# DOGON | GROUP

PROPERTIES

## VILLA CAMPHOR FINISHING SCHEDULE



HEAD OFFICE **021 433 2580** SOUTHERN SUBURBS **021 671 0258**

**dogongroup.com**

*A visionary company with decades of experience*



# DOGON | GROUP

## PROPERTIES

### COMPANY PARTICULARS

Established in 2002, Dogon Group Properties has proven to be a true real estate success story. The Dogon name has become synonymous with the proficient and effective marketing and selling of premium grade properties in Cape Town and particularly the sought-after Atlantic Seaboard. Dogon Group currently have offices in high profile positions in Sea Point and Southern Suburbs.

Dogon Group Properties prides itself on its unique and focused approach to marketing and sales, providing a comprehensive and tailored solution to ensure that sales occur at the optimum price within a compressed space of time. The company utilizes an evolved and distinctive sales force of highly adept and skilled sales agents who are selected for their extensive experience, professionalism and successful track records.

Headed by Managing Director Alexa Horne, Dogon Group has a dedicated in-house marketing department ensuring that focused and specialized marketing strategies are implemented. The powerful proprietary Dogon Group database combined with its eye-catching and prominent advertising, both in print and digital media, together with our visible network of sales offices support our strong performance on the Western Cape's Atlantic Seaboard, Southern Suburbs, Western Seaboard and surrounding areas.

DOGON GROUP PROPERTIES (PTY) LTD  
REGISTRATION NO: 2002/020365/07  
FIDELITY FUND CERTIFICATE NO: F110941  
ALEXA HORNE (MANAGING DIRECTOR)

P O BOX 605 SEA POINT 8060  
THE KINGS, 101 REGENT ROAD  
SEA POINT, SOUTH AFRICA  
TEL +27 21 433 2580  
FAX +27 21 433 2781

### SALES AGENTS



PAUL UPTON  
**071 610 8088**  
paul@dogongroup.com



ALEXA HORNE  
**082 349 7799**  
alexa@dogongroup.com

Registered with the PPRA - Full Status Agent - FFC No. 0525859    Registered with the PPRA - Full Status Agent - FFC No. 1201365

HEAD OFFICE **021 433 2580**    SOUTHERN SUBURBS **021 671 0258**

**dogongroup.com**

*A visionary company with decades of experience*



**FINISHES SPECIFICATION**  
VILLA CAMPHOR, BISHOPSCOURT





**FINISHES SPECIFICATION**  
**VILLA CAMPHOR, BISHOPSCOURT**

**INDEX**

1. EXTERNAL FINISHES
2. FLOOR FINISHES
3. INTERNAL WALL FINISHES
4. INTERIOR FIT OUT
5. KITCHEN APPLIANCES
6. SANITARY WARE
7. POWER
8. WATER
9. SECURITY

**FINISHES SPECIFICATION**  
VILLA CAMPHOR, BISHOPSCOURT



**1. EXTERNAL FINISHES**

1.1 STONE WALL CLADDING

AREA: EXTERIOR FEATURE WALLS & CHIMNEYS

PRODUCT SPEC: PACKED STONE

SIZE: N/A

FINISH: COLOUR DARK GREY

NOTE: ELEVATIONS REPRESENT EXTENT OF STONE



---

1.2 BRICK PAVING

AREA: DRIVEWAY

PRODUCT SPEC: BRICKS

SIZE: N/A

NOTE: TO BE LAID DIAGONALLY



---

1.3 GLASS BALUSTRADES

AREA: BALCONIES

PRODUCT SPEC: LAMINATED SAFETY GLASS

SIZE: 500mm HIGH CHANNEL FIXED GLASS BALUSTRADE

NOTE: STEEL CAPPING FIXED ON TOP



**FINISHES SPECIFICATION**  
VILLA CAMPHOR, BISHOPSCOURT



**1. EXTERNAL FINISHES**

1.4 GARAGE DOORS

AREA: GARAGE

PRODUCT SPEC: ALUMINIUM SECTIONAL OVERHEAD

SIZE: 1 x SINGLE GARAGE DOOR & 1 x DOUBLE GARAGE DOOR

FINISH: BLACK STAIN GARAGE DOOR (WITH HORIZONTAL GROOVES)

NOTE: AUTOMATED



1.5 GATES

AREA: ENTRANCE TO THE PROPERTY

PRODUCT SPEC: STEEL MATCHING EXISTING SLIDING GATE

SIZE: 3m HEIGHT

FINISH: POWDER COATED BLACK



1.6 SABS Approved ALUMINIUM SLIDING DOORS & WINDOWS  
(DOUBLE GLAZED OR LOW E WHERE REQUIRED)

AREA: LIVING ROOM, DINING, KITCHEN, BEDROOMS, PJ LOUNGE

PRODUCT SPEC: HBS NUNKLIP GALAXY SLIDING SYSTEM

SIZE: MIN U/S LINTEL HEIGHT, 120mm WIDE DOOR FRAME

FINISH: COLOUR CHARCOAL, DARK UMBER GREY ANP 3057

NOTE: INCLUDES POSTBOX FLUSH PULL HANDLE & LOCKSET



1.7 STEEL COLUMNS

AREA: OUTDOOR PATIO & BALCONY

PRODUCT SPEC: STEEL COLUMNS

SIZE: TO ENGINEERS SPEC.

COLOUR: BLACK

FINISH: STEEL TO BE COATED



**FINISHES SPECIFICATION**  
VILLA CAMPHOR, BISHOPSCOURT



**1. EXTERNAL FINISHES**

1.8 SWIMMING POOL - FIBRE LINED

AREA: GROUND STOREY GARDEN

COLOUR: TO PURCHASERS SPEC.

NOTE: OPTIONAL POOL HEATING SYSTEMS AND AUTOMATED  
COVER AT PURCHASER'S COST

SIZE: 3.5 x 11m



---

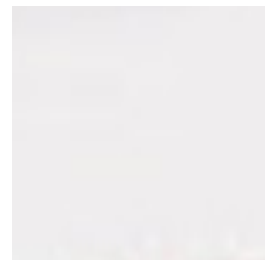
1.9 PLASTER & PAINT

AREA: OUTDOOR FRAMES/EYE-LASHES

PRODUCT SPEC: PLASTER AND PAINT

COLOUR: REFER TO ARCHITECTURAL GUIDELINES

NOTE: REFER TO ELEVATIONS FOR EXTENT OF PAINT



---

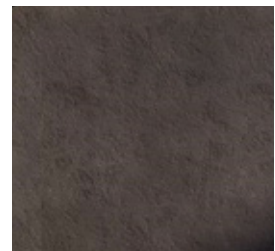
1.10 PLASTER & PAINT

AREA: OUTDOOR WALLS

PRODUCT SPEC: PLASTER AND PAINT

COLOUR: REFER TO ARCHITECTURAL GUIDELINES

NOTE: REFER TO ELEVATIONS FOR EXTENT OF PAINT



**FINISHES SPECIFICATION**  
VILLA CAMPHOR, BISHOPSCOURT



**1. EXTERNAL FINISHES**

1.11 ROK BRICKS

AREA: WALLS

PRODUCT SPEC: ROK BRICKS

NOTE: PLASTER & PAINTED



---

1.12 PLANTERS

AREA: ROOFS

NOTE: AS PER PLAN, TO LATER DETAIL

NOTE: PLANTERS TO BE WATERPROOFED AND CONNECTED TO IRRIGATION SYSTEM

---



**FINISHES SPECIFICATION**  
VILLA CAMPHOR, BISHOPSCOURT



**2. FLOOR FINISHES**

2.1 INTERNAL FLOOR TILE

AREA: BATHROOMS

PRODUCT SPEC: PORCELAIN TILE PROPOSED AS PER RENDER

SIZE: 1200mm x 600mm PC R600 PER SQM TILE SUPPLY ONLY

COLOUR: GREY

NOTE: GROUTING COLOUR TO MATCH



---

2.2 BATHROOM SHOWER FLOOR TILE

AREA: BATHROOMS

PRODUCT SPEC: PORCELAIN TILE PROPOSED AS PER RENDER

SIZE: 1200mm x 600mm PC R600 PER SQM TILE SUPPLY ONLY

COLOUR: GREY

NOTE: GROUTING COLOUR TO MATCH



---

2.3 EXTERIOR BALCONY FLOOR TILE

AREA: BALCONIES

PRODUCT SPEC: EXTERNAL NON-SLIP TILE PROPOSED AS PER RENDER

SIZE: 1200mm x 600mm PC R450 PER SQM TILE SUPPLY ONLY

COLOUR: GREY

NOTE: GROUTING COLOUR TO MATCH



---

2.4 EXTERIOR BALCONY FLOOR TILE

AREA: PATIOS

PRODUCT SPEC: EXTERNAL NON-SLIP TILE PROPOSED AS PER RENDER

SIZE: 1200mm x 600mm PC R450 PER SQM TILE SUPPLY ONLY

COLOUR: GREY

NOTE: GROUTING COLOUR TO MATCH



**FINISHES SPECIFICATION**  
VILLA CAMPHOR, BISHOPSCOURT



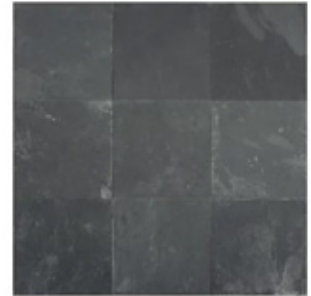
**2. FLOOR FINISHES**

2.5 GARAGE FLOOR FINISH

AREA: GARAGE

PRODUCT SPEC: BLACK SLATE TILE

SIZE: 200X200 PC R200 PER SQM TILE SUPPLY ONLY



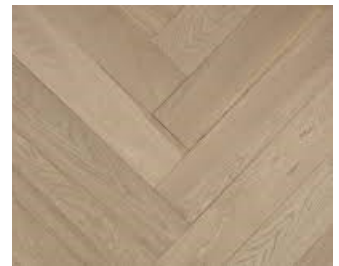
---

2.6 TIMBER FLOORING

AREA: LIVING ROOM, DINING, KITCHEN ,FAMILY ROOM, BEDROOMS

PRODUCT SPEC: OAK

NOTE: HERRINGBONE PATTERN (COLOUR TO BE CONFIRMED)



---

2.7 SKIRTINGS

AREA: LIVING ROOM, DINING, KITCHEN, BEDROOMS, PJ LOUNGE

PRODUCT SPEC: PAINTED HARDWOOD

SIZE: 100mm x 22mm HIGH SKIRTING STRIP

COLOUR: TO SPECIFICATION



**FINISHES SPECIFICATION**  
VILLA CAMPHOR, BISHOPSCOURT



**3. INTERNAL WALL FINISHES**

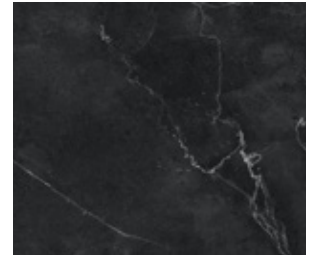
**3.1 WALL TILES (SPLASH BACKS & CHIMNEY BREAST)**

AREA: KITCHEN & SCULLERY, FAMILY ROOM, CHIMNEY BREAST

PRODUCT SPEC: BLACK PORCELAIN TILE WITH GRAIN

SIZE: 1200mm x 600mm PC R600 PER SQM TILE SUPPLY ONLY

NOTE: SUPPLIER TO PURCHASER'S SELECTION



---

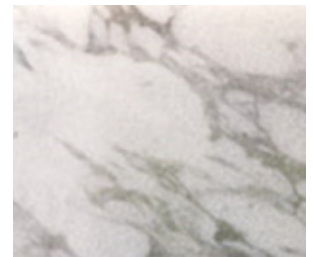
**3.2 WALL TILES (SHOWER WALLS)**

AREA: BATHROOMS

PRODUCT SPEC: WHITE PORCELAIN TILE WITH GRAIN

SIZE: 1200mm x 600mm PC R600 PER SQM TILE SUPPLY ONLY

NOTE: SUPPLIER TO PURCHASER'S SELECTION



---

**3.3 WALL TILES (SWIMMING POOL EDGE)**

AREA: POOL

PRODUCT SPEC: ANTHRACITE LAPPARTO (OR SIMILAR APPROVED)

SIZE: 1200mm x 600mm R600 PER SQM TILE SUPPLY ONLY

COLOUR: TO PURCHASER'S SELECTION

NOTE: AS PER PATIO/ TERRACE



---

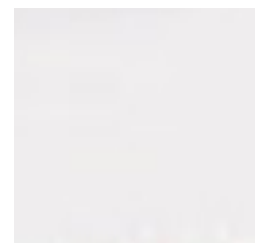
**3.4 PLASTER & PAINT**

AREA: INTERNAL SPACES

PRODUCT SPEC: PLASTER AND PAINT

COLOUR: REFER TO ARCHITECTURAL GUIDELINES

NOTE: REFER TO ELEVATIONS FOR EXTENT OF PAINT



**FINISHES SPECIFICATION**  
VILLA CAMPHOR, BISHOPSCOURT



**3. INTERNAL WALL FINISHES**

3.5 FEATURE WALL (PAINT)

AREA: BEDROOM & FAMILY ROOM

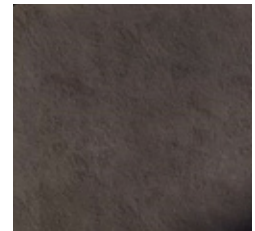
PRODUCT SPEC: PLASTER AND PAINT

COLOUR: REFER TO ARCHITECTURAL GUIDELINES

NOTE: REFER TO ELEVATIONS FOR EXTENT OF PAINT

NOTE: CLIENT TO ADVISE WHICH WALL

NOTE: PC R500 + PER SQM



---

3.6 1 x FEATURE WALL (TIMBER)

AREA: ENTRANCE, FAMILY ROOM

PRODUCT SPEC: IDEATEC VERTICAL STRIPS ACCOUSTIC WALL

SIZE: TO BE CONFIRMED

NOTE: POSITION TO BE DECIDED BY BUYER



**FINISHES SPECIFICATION**  
VILLA CAMPHOR, BISHOPSCOURT



**4. INTERIOR FIT OUT**

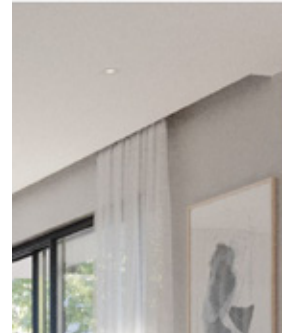
**4.1 INTERIOR CEILINGS**

AREA: INTERIOR SPACES

PRODUCT SPEC: SUSPENDED SKIMMED & PLASTER GYPSUM BOARD

COLOUR: WHITE

NOTE: SHADOW LINE RECESSES ALONG WALLS AND 250mm RECESS FOR CURTAIN TRACK



---

**4.2 3 x FEATURE LIGHT FITTING**

AREA: ABOVE DINING TABLE. KITCHEN ISLAND & ENTRANCE

PRODUCT SPEC: TO PURCHER'S SELECTION

SIZE: TO FIT WITHIN ALLOWANCE

NOTE: POSITION TO BE AGREED WITH BUYER

PC R15 000 PER FITTING SUPPLY ONLY



---

**4.3 INTERNAL DOOR FRAMES**

AREA: ALL INTERIOR DOORS

PRODUCT SPEC: 2.4M HIGH HORIZONTAL SLATTED SOLID DOOR

FINISH: SOLID WOOD DOOR JAM LININGS

NOTE: ALL PAINTED TO SPEC.

---

**4.4 INTERNAL DOOR IRONMONGERY**

AREA: ALL INTERIOR DOORS, EXCLUDING ALUMINIUM SLIDING DOORS

PRODUCT SPEC: TO PURCHASER'S SELECTION

NOTE: PER DOOR FOR LOCKSET, HINGES, HANDLES, AND DOOR STOP

PC R800

NOTE: ALL SOFT CLOSE



**FINISHES SPECIFICATION**  
VILLA CAMPHOR, BISHOPSCOURT



**4. INTERIOR FIT OUT**

4.5 INTERIOR JOINERY (BEDROOMS)

AREA: BEDROOMS

PRODUCT SPEC: DUCO MATT

SIZE: TO BE CONFIRMED

FINISH: DUCO COLOUR TO THE PURCHASER'S SELECTION

NOTE: BLUM SOFT CLOSERS AND RUNNERS



---

4.6 INTERIOR JOINERY (KITCHEN)

AREA: KITCHEN

PRODUCT SPEC: DUCO COLOUR TO PURCHASER'S  
SELECTION

SIZE: TO BE CONFIRMED

FINISH: DUCO COLOUR BLACK

NOTE: BLUM SOFT CLOSERS AND RUNNERS



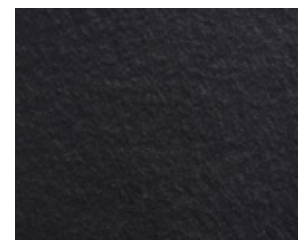
---

4.7 COUNTER TOP (KITCHEN)

AREA: KITCHEN

PRODUCT SPEC: ENGINEERED STONE/ BLACK LEATHERED  
GRANITE

NOTE: TO BE DECIDED BY PURCHASER



---

4.8 INTERIOR JOINERY (VANITIES)

AREA: BATHROOMS

PRODUCT SPEC: DUCO MATT

SIZE: TO BE CONFIRMED

FINISH: DUCO COLOUR TO THE PURCHASER'S SELECTION

NOTE: ENGINEERED OAK STAINED TO LATER DETAIL



**FINISHES SPECIFICATION**  
VILLA CAMPHOR, BISHOPSCOURT



**4. INTERIOR FIT OUT**

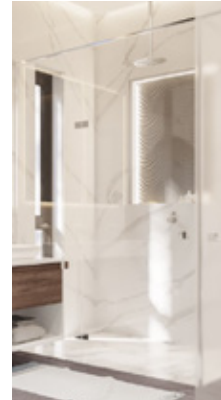
4.9 SHOWER AND WC GLASS SCREENS

AREA: ALL ENSUITES

PRODUCT SPEC: 2000mm HIGH FRAMELESS GLASS

COLOUR: CLEAR

NOTE: FROSTED GLASS TO WC



**4. INTERIOR FIT OUT**

4.10 ELECTRICAL SWITCHGEAR & LIGHTING CONTROL

AREA: INTERIOR SPACES & PATIO

PRODUCT SPEC: LE GRAND ARTEOR RANGE WITH COVERS

COLOUR: BLACK OR WHITE

NOTE: PURCHASER'S REQUIREMENTS TO BE CONFIRMED



4.11 HEATING & COOLING

AREA: LIVING ROOM AND BEDROOMS

PRODUCT SPEC: AIR CONDITIONING UNITS

NOTE: SPLIT UNIT AIR CONDITIONING

NOTE: TO SPECIALIST'S DETAIL

NOTE: INTERGRATED SPLIT UNIT OPTIONAL AT PURCHASER'S COST



4.12 HEATING (UNDERFLOOR HEATING)

AREA: ALL BATHROOMS

PRODUCT SPEC: UNDERFLOOR HEATING

NOTE: TO SPECIALIST'S DETAIL

**FINISHES SPECIFICATION**  
VILLA CAMPHOR, BISHOPSCOURT



**4. INTERIOR FIT OUT**

4.11 TOWEL HEATER

AREA: ALL BATHROOMS

PRODUCT SPEC: ELECTRIC TOWEL HEATER

FINISH: CHROME

SUPPLIER: ON TAP PLUMBING & BATHROOMS

---

4.11 FIREPLACE

AREA: FAMILY/POOL ROOM, LOUNGE ROOM, DINING AND MAIN BEDROOM

PRODUCT SPEC: LAVA CUBO INSERT CLOSED COMBUSTION FIREPLACE

NOTE: 900 CUBO TO FAMILY /POOL ROOM

NOTE: 1200 CUBO TO LOUNGE

NOTE: 700 CUBO TO MAIN BEDROOM (OPTIONAL)

NOTE: 900 CUBO TO DINING (OPTIONAL)



---

4.11 BRAAI

AREA: FAMILY/POOL PATIO (OUTDOOR KITCHEN) AND KITCHEN/DINING PATIO

PRODUCT SPEC: LAVA 1200 BUILT-IN GAS COMBINATION BRAAI

NOTE: KITCHEN/DINING BRAAI OPTIONAL





**FINISHES SPECIFICATION**  
VILLA CAMPHOR, BISHOPSCOURT



**5. KITCHEN APPLIANCES**

5.1 OVEN

AREA: KITCHEN

PRODUCT SPEC: SIEMENS 90cm BUILT-IN ELECTRIC OVEN

SIZE: 896mm x 594mm x 570mm

FINISH: STAINLESS STEEL WITH BLACK FRONT

SUPPLIER: SIEMENS



(VB554DFR0)

5.2 HOB

AREA: KITCHEN

PRODUCT SPEC: SIEMENS 90cm GAS CERAMIC HOB

SIZE: 912mm x 520mm

FINISH: CERAMIC TOP SHEET WITH CAST IRON PAN SUPPORT

SUPPLIER: SIEMENS



(ER9A6SD70Z)

5.3 EXTRACTOR FAN

AREA: KITCHEN

PRODUCT SPEC: SIEMENS ISLAND CHIMNEY HOOD

SIZE: 898mm x 600mm

FINISH: STAINLESS STEEL

SUPPLIER: SIEMENS



(LF97BBM50)

5.4 INTEGRATED MICROWAVE

AREA: KITCHEN

PRODUCT SPEC: SIEMENS COMPACT MICROWAVE & OVEN

SIZE: 594mm x 455mm x 548mm

FINISH: STAINLESS STEEL WITH BLACK FRONT

SUPPLIER: SIEMENS



(ET375FFP1E)

**FINISHES SPECIFICATION**  
VILLA CAMPHOR, BISHOPSCOURT



**6. SANITARY WARE**

6.1 BASIN

AREA: ALL BATHROOMS

PRODUCT SPEC: GEBERIT VARIFORM COUNTERTOP BASIN

SIZE: 550mm x 400mm x 178mm

FINISH: WHITE

SUPPLIER: ON TAP PLUMBING & BATHROOMS



6.2 BASIN MIXER

AREA: ALL BATHROOMS

PRODUCT SPEC: TALIS 190 BASIN MIXER (HANS GROHE)

SIZE: 154mm x 46mm x 332mm

FINISH: CHROME

SUPPLIER: ON TAP PLUMBING & BATHROOMS



6.3 BATH

AREA: MASTER BATHROOM

PRODUCT SPEC: LIVINGSTONE BATHS CHARLOTTE FREE STANDING

SIZE: 1600mm x 735mm x 530mm

FINISH: WHITE (POLISHED OR MATT TO BE CONFIRMED)

SUPPLIER: ON TAP PLUMBING & BATHROOMS



6.4 BATH MIXER

AREA: MASTER BATHROOM

PRODUCT SPEC: TALIS S BATH MIXER HANS GROHE

SIZE: 120mm x 150mm x 150mm

FINISH: CHROME

SUPPLIER: ON TAP PLUMBING & BATHROOMS



**FINISHES SPECIFICATION**  
VILLA CAMPHOR, BISHOPSCOURT



**6. SANITARY WARE**

6.5 BATH SPOUT

AREA: MASTER BATHROOM & BEDROOM 3  
PRODUCT SPEC: GIO PLUMBING WALL SPOUT  
SIZE: 185mm x 25mm  
FINISH: CHROME  
SUPPLIER: ON TAP PLUMBING & BATHROOMS



6.6 SHOWER HEAD

AREA: ALL BATHROOMS  
PRODUCT SPEC: LA GIO BELLA ROUND ROSE  
SIZE: 250mm DIAMETER  
FINISH: STAINLESS STEEL  
SUPPLIER: ON TAP PLUMBING & BATHROOMS



6.7 SHOWER ARM

AREA: ALL BATHROOMS  
PRODUCT SPEC: LA GIO BELLA CEILING SHOWER ARM  
SIZE: 24mm x 150mm  
FINISH: CHROME  
SUPPLIER: ON TAP PLUMBING & BATHROOMS



6.8 SHOWER MIXER

AREA: ALL BATHROOMS  
PRODUCT SPEC: TALIS S BATH MIXER HANSGROHE  
SIZE: 120mm x 150mm x 150mm  
FINISH: CHROME  
SUPPLIER: ON TAP PLUMBING & BATHROOMS



**FINISHES SPECIFICATION**  
VILLA CAMPHOR, BISHOPSCOURT



**6. SANITARY WARE**

6.9 ACTUATOR PLATE

AREA: ALL BATHROOMS

PRODUCT SPEC: ALPHA 15 DUAL FLUSH GEBERIT

SIZE: 213mm x 16mm x 142mm

FINISH: BRIGHT CHROME

SUPPLIER: ON TAP PLUMBING & BATHROOMS



---

6.10 TOILET

AREA: ALL BATHROOMS

PRODUCT SPEC: D-NEO WALL MOUNTED TOILET DURAVIT

SIZE: 540mm

FINISH: WHITE HIGH GLOSS

SUPPLIER: ON TAP PLUMBING & BATHROOMS



---

6.11 SCULLERY MIXER

AREA: KITCHEN AND OUTDOOR KITCHEN

PRODUCT SPEC: DÉCOR KITCHEN MIXER 260 SWIVEL SPOUT HANSGROHE

SIZE: 237mm x 104mm x 338mm

FINISH: CHROME

SUPPLIER: ON TAP PLUMBING & BATHROOMS



---

6.12 PREP BOWL

AREA: KITCHEN & OUTDOOR KITCHEN

PRODUCT SPEC: SELENE SLX110-40 UNDERSLUNG SINK FRANKE

SIZE: 428mm x 428mm x 190mm

FINISH: CHROME

SUPPLIER: ON TAP PLUMBING & BATHROOMS



**FINISHES SPECIFICATION**  
VILLA CAMPHOR, BISHOPSCOURT



**6. SANITARY WARE**

6.13 SINK MIXER

AREA: SCULLERY

PRODUCT SPEC: DÉCOR KITCHEN MIXER PULL-ROD-OUT HANSGROHE

SIZE: 272mm x 104mm x 411mm

FINISH: CHROME

SUPPLIER: ON TAP PLUMBING & BATHROOMS



---

6.14 SINK (DOUBLE)

AREA: SCULLERY

PRODUCT SPEC: SELENE SLX110-40 UNDERSLUNG SINK FRANKE

SIZE: 428mm x 428mm x 190mm

FINISH: CHROME

SUPPLIER: ON TAP PLUMBING & BATHROOMS



**FINISHES SPECIFICATION**  
VILLA CAMPHOR, BISHOPSCOURT



**7. POWER**

A 8KVA INVERTER AND LITHIUM BATTERY ARE SUPPLIED AS STANDARD.

THE PURCHASER CAN UPGRADE THE INVERTER AND STORAGE, CONVERT TO SOLAR, ADD A SILENT GENERATOR AND ADD A CAR-CHARGING SYSTEM AT THE PURCHASER'S COST.

---

**8. WATER**

A BORE HOLE, 5000L STORAGE TANK AND IRRIGATION SYSTEM ARE INCLUDED AS STANDARD.

THE PURCHASER CAN UPGRADE TO A WATER PURIFICATION SYSTEM AT THE PURCHASER'S COST.

---

**9. SECURITY**

THE FOLLOWING FEATURES OF THE SECURITY SYSTEM ARE INCLUDED AS STANDARD:

GUARD HOUSE AT THE DRIVEWAY ENTRANCE

PERIMETER ELECTRIC FENCING

8 CAMERA CCTV SYSTEM

ALARM SYSTEM LINKED TO SECURITY PROVIDER

EXTERNAL BEAMS IN GARDEN

INTERNAL MOTION DETECTORS

UPGRADES TO THE STANDARD FEATURES ARE AT PURCHASER'S COST.

---